

Small investment. Big results.

Optimize your grinding process – with our unique mix of expertise, excellent products and comprehensive services.



Our Liquid Tool. Your Success.

Grind better with us.

We always view machine, tools and grinding fluid as one inseparable whole. This allows us to optimize your grinding process, keep it stable and resolve issues quickly.

Measurable added value

Let us show you that the metalworking fluid is not a necessary evil, but a powerful lever on your production costs and grinding processes.

Productivity, economic efficiency and process stability are factors that critically depend on the choice and the quality of your grinding fluid.

Tried and tested solutions

When developing our solutions, we work closely with manufacturers of machines, tools and filter technologies as well as universities and specialized institutes.

This ensures that machine, tools and grinding fluid are as compatible as possible. And you can be sure that you can fully capitalize on the potential of your grinding process.



Blasogrind

Mineral oil-based grinding oils and high-performance oils with GTL technology (gas to liquids)

Grindex

Grinding emulsions and oil-free solutions

For a wide range of applications and industries

- From universal grinding to highly specialized grinding applications incl. EDM
- For soft to super-hard metals and alloys, ceramics and other materials
- Compatible with and approved for a variety of grinding machines and filter technologies



Versatile grinding expertise

Each grinding process shows complex correlations between chemistry and mechanics.

That's why our specialists from chemistry and process engineering work closely together – from basic research in the chemical laboratory to endurance tests in our in-house technology center.

Comprehensive services

- Individual consulting – from grinding operations to entire production processes
- Regular analysis of your grinding fluid samples in our worldwide laboratories
- Support with questions on chemistry and microbiology
- On-site training and support



Your Blaser expert is on site for you

- Ensures optimum starting conditions for your grinding fluid
- Supports you with monitoring and maintenance, including automation solutions
- Regularly checks optimization options together with you

Our approach

In four steps to the Liquid Tool™

Every customer situation is unique. We analyze your grinding process, define the desired improvements together with you and prove in tests that they get achieved.

1 Comprehensive analysis

With your requirements and goals as starting point, we analyze your entire grinding process on site.

2 Status report with improvement suggestions

We develop concrete measures and define the goals for the test phase with you.

3 Reality check with on-site testing

We test and document our solution in your production environment. You and your team can experience the improvements live.

4 Implementation and support

Once the tests have been successfully completed, we define the next steps together, including training and customized support.

Your grinding fluid becomes a key success factor – a Liquid Tool.



Your individual added value

- Stable processes
- Short cycle times
- Consistent workpiece quality
- Safe working environment and happy employees
- Lower overall costs
- Careful use of resources
- Clean machines and parts
- Long tool and sump life
- Low top-up rates and more



Our grinding experts create tangible and measurable added value around the globe.



Tom Cappadona, USA

"We ensure stable processes, high repeatability and excellent results. This minimizes post-processing and rejects."



Martin Reichhart, Germany

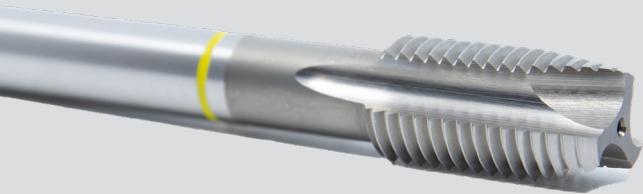
"With optimized removal rates, you can produce more in less time without compromising the dimensional accuracy of your workpieces."



Simon Stalder, Switzerland

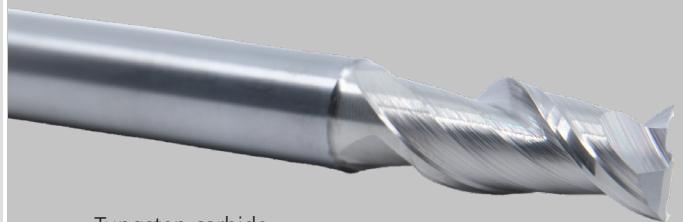
"Our solutions always include the safety and satisfaction of your employees – thanks to low-emission, skin-friendly and odorless products."

Minimizing burn marks



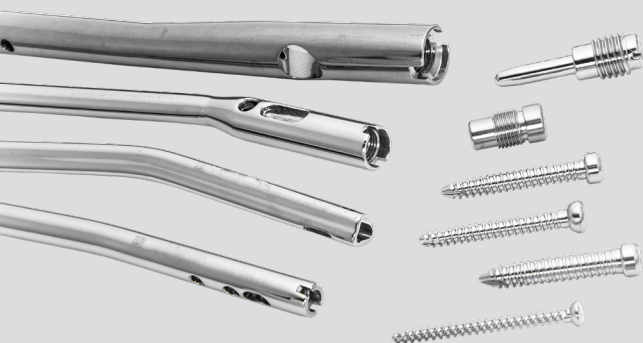
High-speed steel HSS

Minimizing cobalt leaching



Tungsten carbide

Minimizing burrs



Medical instruments and implants

Maximizing number of parts per machine hour



High-precision components

Gentle to people and the environment – since 1936.



Headquarters and production facility in Hasle-Rüegsau, Switzerland

Blaser Swisslube has always stood for solutions with measurable added value that are gentle to people and the environment – from our first successful product, a water-repellent shoe cream for Swiss farmers, to our Blasocut metalworking fluid with its unique Bio-Concept, to today's Liquid Tool.



Test us. It's worth it.
blaser.com/grinding



Our Liquid Tool. Your Success.